

# FANTASEA CONDO

RAWAI PHUKET THAILAND





FANTASEA CONDO  
RAWAI





FANTASEA CONDO  
RAWAI



FANTASEA



FANTASEA CONDO  
RAWAI





FANTASEA CONDO  
RAWAI



# FANTASEA CONDO RAWAI

## WHERE LUXURY MEETS THE OCEAN BREEZE

Nestled in the vibrant Saiyuan area of Rawai, Phuket, [FantaSea Condo Rawai](#) is a stunning fusion of modern architecture and tropical serenity. Just 600 meters from the Andaman Sea, the rooftop infinity pool offers sweeping panoramic views, where the sky and ocean melt into one. Here, every sunrise and sunset transforms the horizon into a breathtaking masterpiece, creating an exquisite living experience. Designed with island vibrance and contemporary elegance, the condominium features a bold green and orange color palette, reflecting the spirit of tropical living while creating a warm and inviting ambiance. Step into a sophisticated lobby, unwind at the charming café, and invigorate your body at the state-of-the-art gym. The sky garden provides a tranquil escape where ocean breezes whisper relaxation. For those seeking the perfect balance of work and leisure, [FantaSea Condo Rawai](#) offers a co-working space, while families can enjoy quality time at the dedicated kids' club.

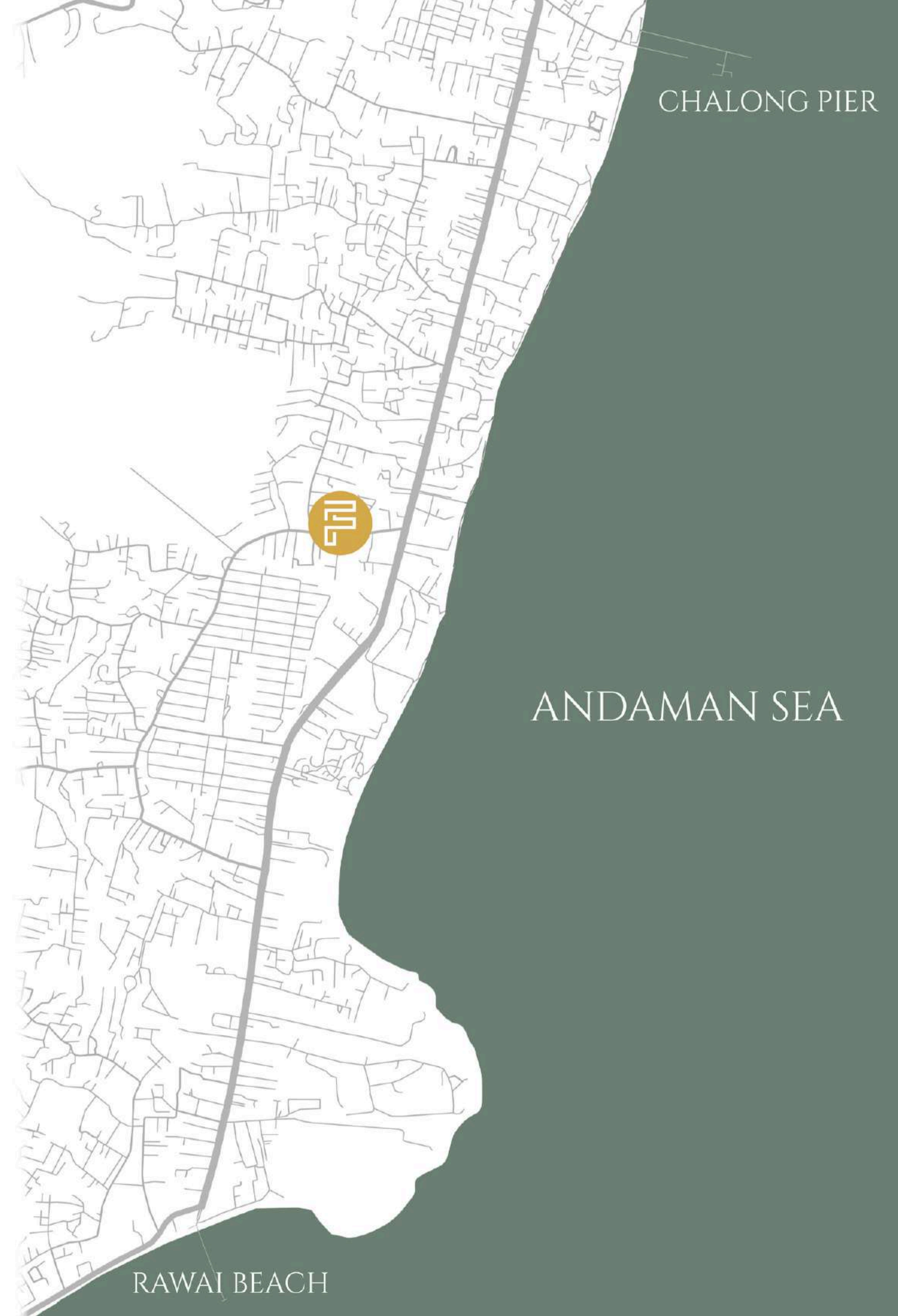
Live the Dream. Embrace the Ocean. Discover FantaSea Condo Rawai!

# LOCATION

## FANTASEA CONDO RAWAI

Situated in a prime location that balances tranquility and convenience, the condominium is within a 10-minute drive of Rawai Beach, Nai Harn Beach and Promthep Cape, where soft golden sands meet crystal-clear waters. Take a short trip to Chalong Pier to embark on an island-hopping adventure or visit the Rawai Seafood Market for the freshest local seafood delicacies.

For everyday essentials, a 7-11 convenience store is right downstairs, and popular supermarket Makro is just minutes away. The area is dotted with trendy restaurants, cozy cafés, and lively bars, offering a dynamic yet relaxed lifestyle.



# LOCATION



RAWAI BEACH

# LOCATION

An aerial photograph of a tropical coastline. The top half of the image shows a dense, green forested hillside. In the middle ground, a large, modern resort complex with several multi-story buildings is situated on a rocky peninsula. To the right of the resort is a wide, sandy beach. The water in the foreground is a vibrant turquoise color, transitioning to a deeper blue further out. Numerous sailboats are scattered across the water, some with their sails up. The overall scene is bright and sunny, suggesting a clear day.

NAIHARN BEACH

# LOCATION

An aerial photograph of a tropical coastline. On the left, a road winds through lush green hills down to a sandy beach. The water is a vibrant turquoise color, transitioning to a deeper blue further out. A small boat is visible in the water. In the foreground, there are dense green bushes and palm trees. The sky is bright blue with scattered white clouds.

YANUI BEACH

# LOCATION



PROMTHER CAPE

# LOCATION

An aerial photograph of Chalong Pier, a long, narrow concrete structure extending into clear turquoise water. The pier has a light-colored walkway and a series of blue-tinted rectangular panels along its length. Several boats are visible: a white motorboat with a red canopy is docked at the pier; a white motorboat is nearby; a small boat with a yellow and blue canopy is docked; and a white motorboat with a red canopy is further out in the water. The water is bright and clear, reflecting the sky.

CHALONG PIER

# LOCATION



FANTASEA CONDO  
RAWAI

## VIEW POINTS

- Chalong Pier 3.1 KM.
- Rawai Beach 3.7 KM.
- Naiharn Beach 4.2 KM.
- Yanui Beach 6.2 KM.
- Prompthep Cape 6.9 KM.

## SHOPPING MALLS

- Makro Rawai 2.4 KM.
- Homepro Village Chalong 3.4 KM.
- Robinson Chalong 6.6 KM.
- Central Phuket 14 KM.



# LOCATION



FANTASEA CONDO  
RAWAI

## SCHOOLS

- International School of Phuket 2.6 KM.
- BCIS Phuket International School 5.9 KM.
- Oak Medow International School 9.5 KM.
- HeadStart International School 12 KM.
- British International School Phuket 23 KM.

## HOSPITALS

- Chalong Hospital 3.5 KM.
- Dibuk Hospital 10 KM.
- Bangkok Hospital Siriroj 14 KM.
- Bangkok Hospital Phuket 15 KM.



**ADDRESS:** RAWAI PHUKET THAILAND

**DEVELOPER:** FANTASEA PLUS

**LAND AREA:** 1-3-93.7 RAI ( 3174.86 SQ.M.)

**BUILD-UP AREA:** 12632.68 SQ.M.

**TOTAL UNITS:** 174

**COMMON AREA:** 3553.87 SQ.M.

**PARKING AREA:** 59 LOTS

**COMPLETION:** 4TH QUARTER 2027



An aerial architectural rendering of a modern, multi-story residential building. The building is white with a grid of windows and balconies. It features a rooftop terrace with lounge furniture. A parking lot with several cars is visible in the foreground. The building is surrounded by lush green trees and a clear sky. The text "MASTER PLAN" is overlaid in a large, gold, serif font across the center of the image.

# MASTER PLAN

# GROUND FLOOR PLAN



FANTASEA CONDO  
RAWAI

- TYPE A - 34 SQ.M. (8 UNITS)
- TYPE B - 52 SQ.M. (2 UNITS)

NORTH



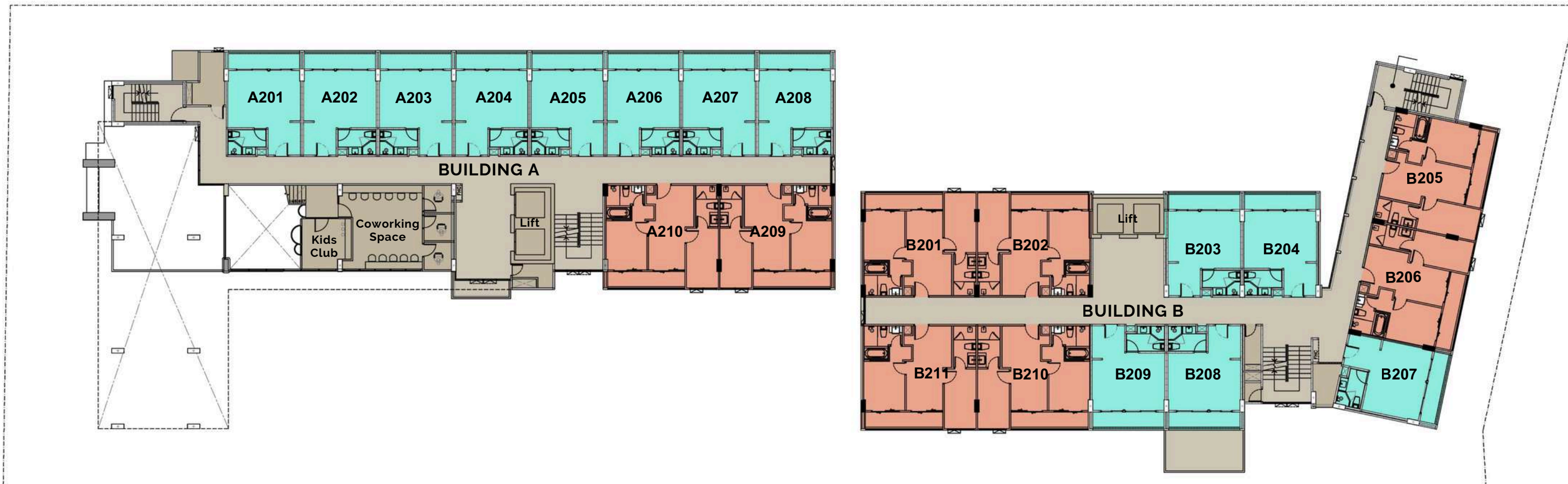
# SECOND FLOOR PLAN



FANTASEA CONDO  
RAWAI

- TYPE A - 34 SQ.M. (13 UNITS)
- TYPE B - 52 SQ.M. (8 UNITS)

NORTH



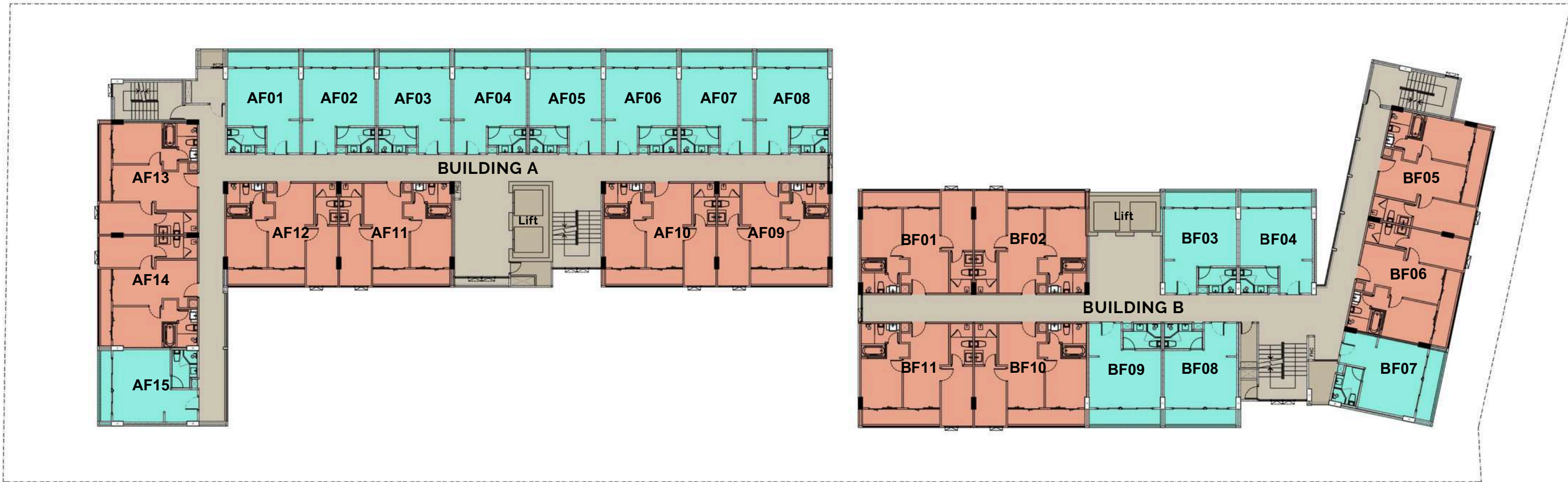
# 3RD-7TH FLOOR PLAN



FANTASEA CONDO  
RAWAI

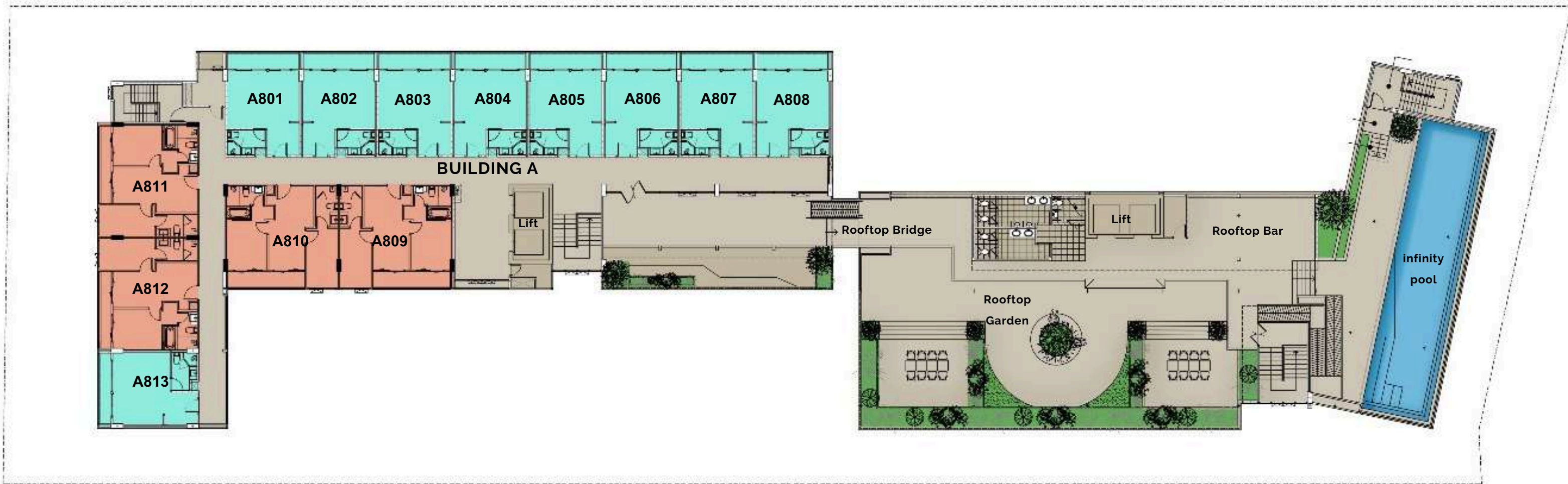
- TYPE A - 34 SQ.M. (14 UNITS)\*5F
- TYPE B - 52 SQ.M. (12 UNITS)\*5F

NORTH



# 8TH FLOOR PLAN

- TYPE A - 34 SQ.M. (9 UNITS)
- TYPE B - 52 SQ.M. (4 UNITS)





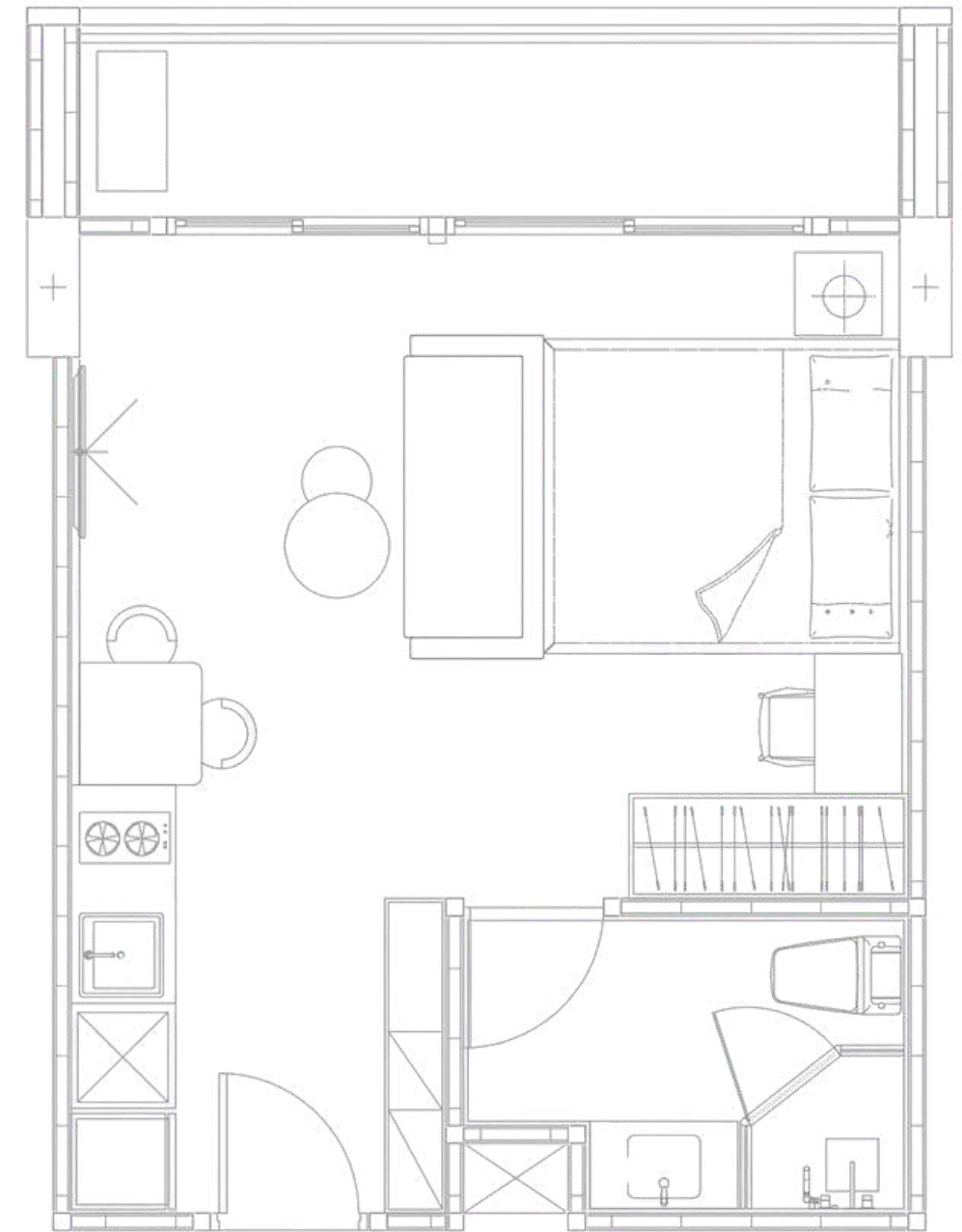
# ROOM PLAN



FANTASEA CONDO  
RAWAI

# TYPE A

## ONE BEDROOM



TOTAL AREA:  
**34 SQ.M.**



One Bedroom



Kitchen



Dining Area



Laundry



Bathroom





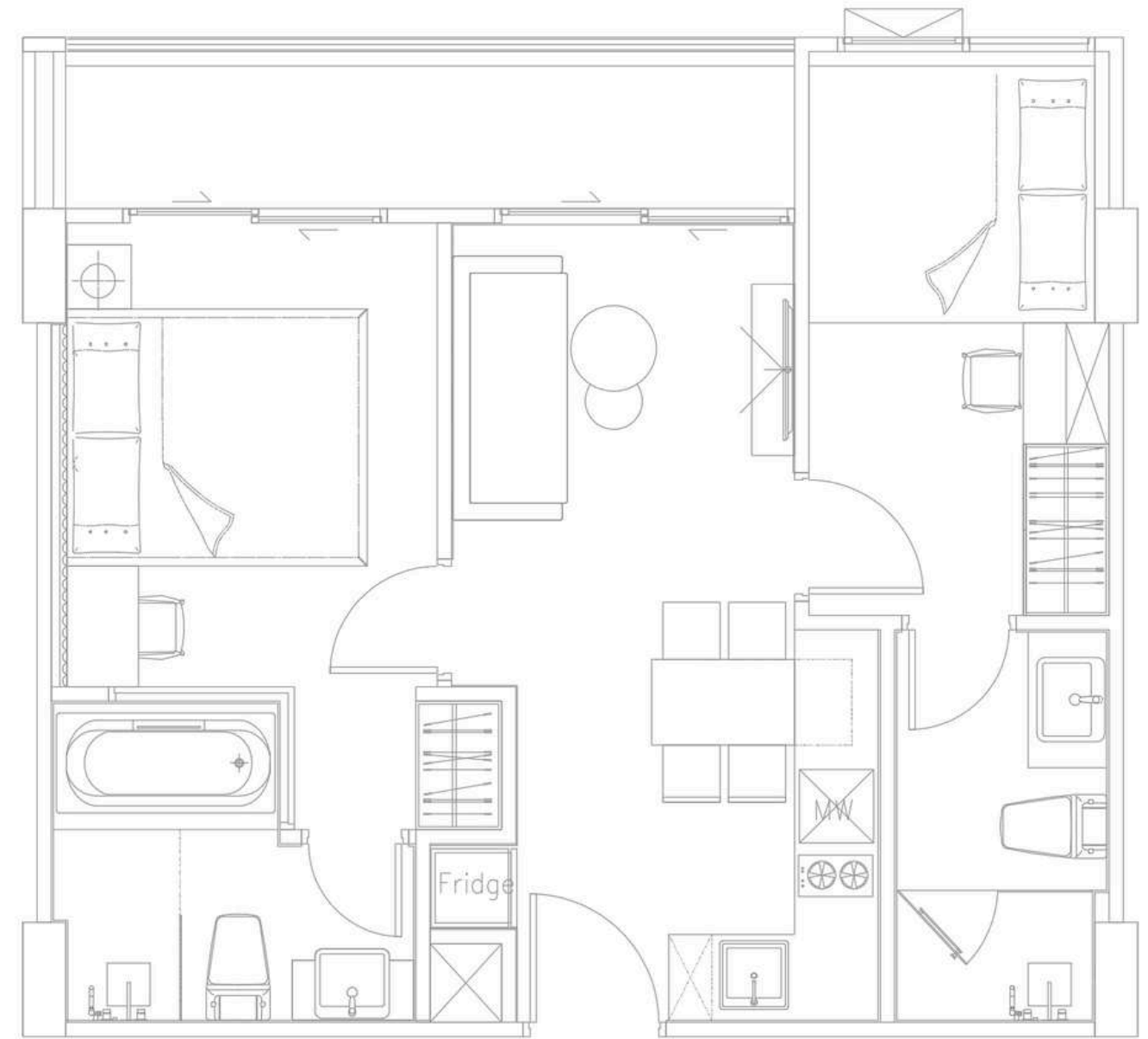




FANTASEA CONDO  
RAWAI

# TYPE B

## TWO BEDROOM



TOTAL AREA:  
**52 SQ.M.**



Two Bedroom



Bathtub



Kitchen



Dining Area



Laundry



Bathroom









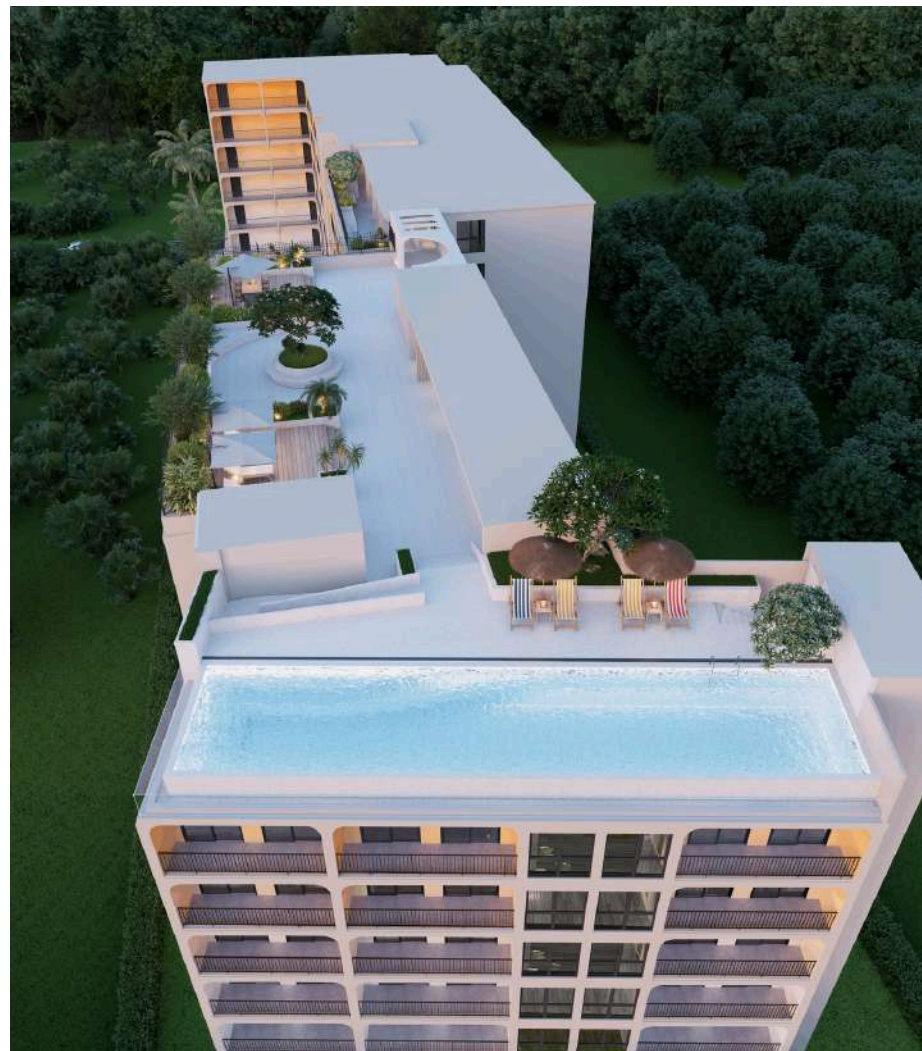




FANTASEA CONDO  
RAWAI



LOBBY



INFINITY POOL



FITNESS



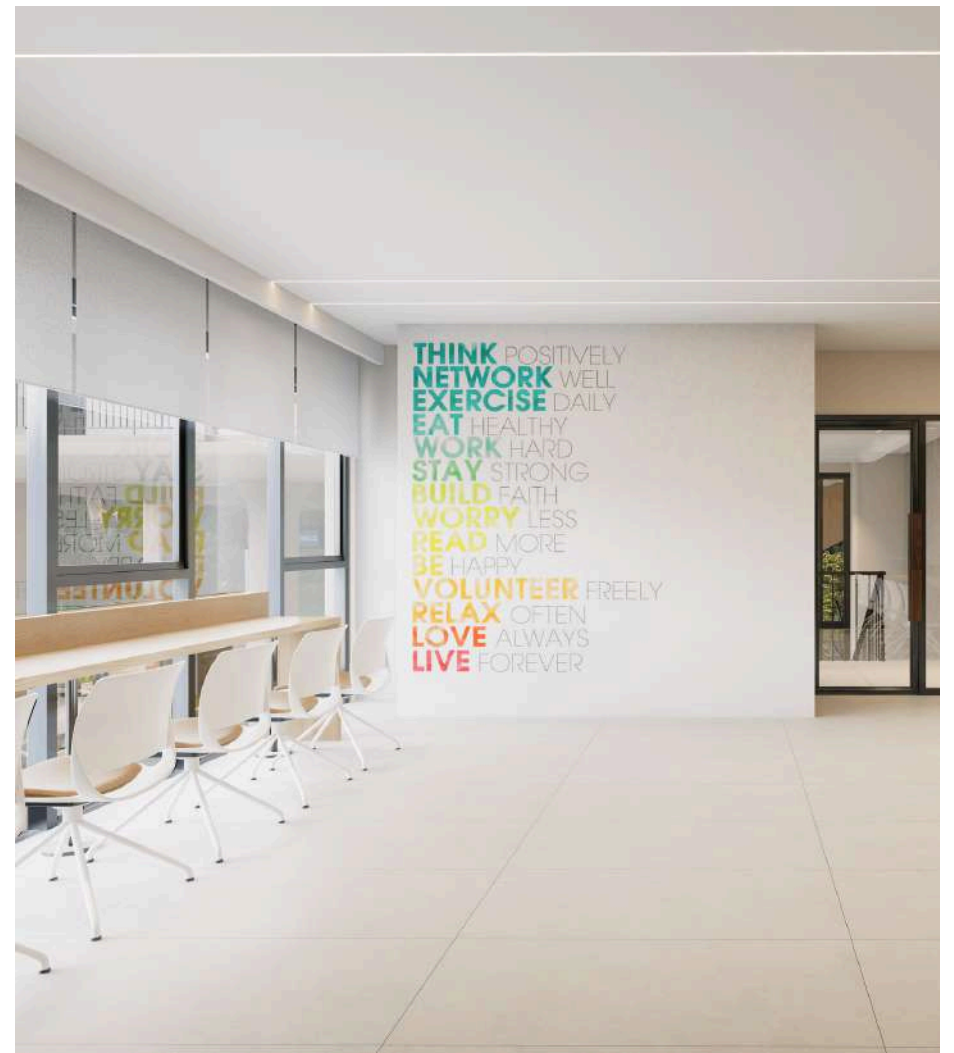
FANTASEA CONDO  
RAWAI



CAFE



POOL BAR



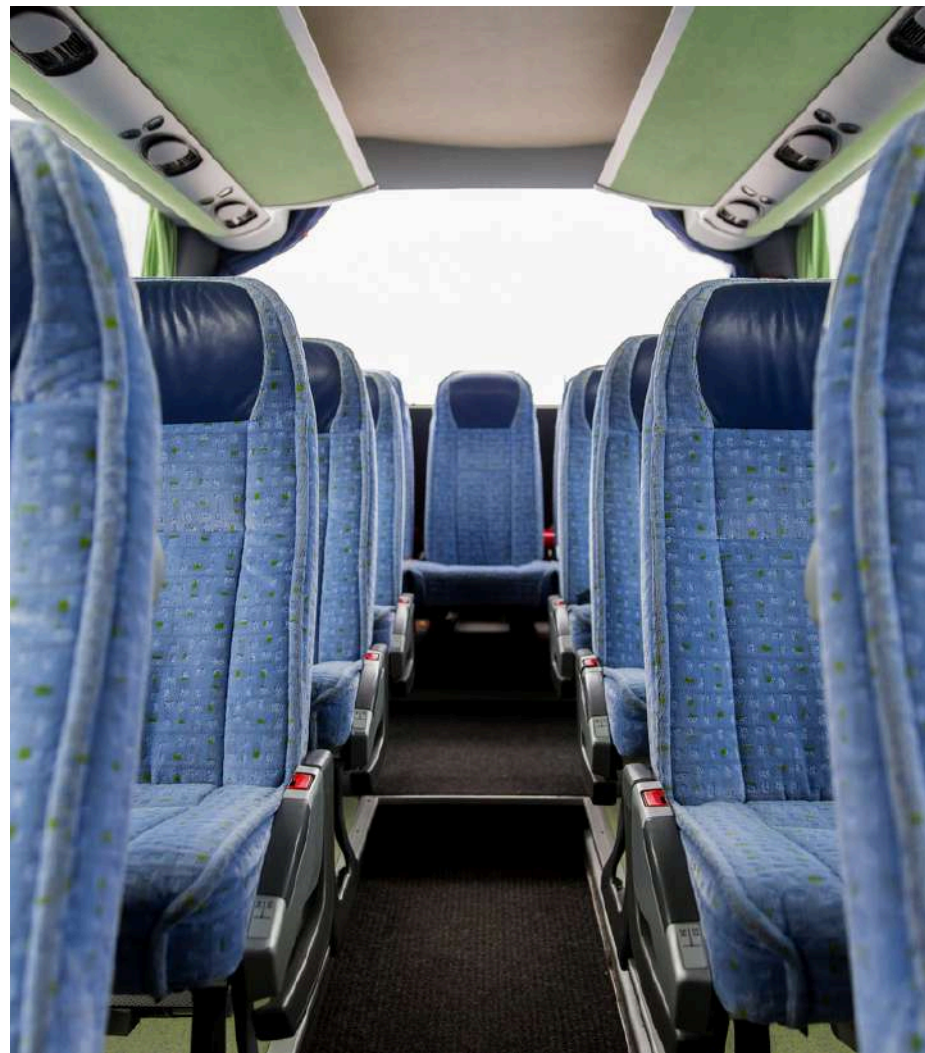
CO-WORKING



FANTASEA CONDO  
RAWAI



KIDS CLUB



SHUTTLE SERVICE



MEMBERSHIP



# FANTASEA PLUS



Ocean Palms Villa  
Bangtao  
14 Villas  
Completion 2020



Chalong Marina  
Bay view  
67 Units  
Completion 2024



Fantasea Condo  
Kamala  
164 Units  
Completion 2024



Capri Residence  
Bangtao  
231 Units  
Completion 2025



Wyndham Fantasea  
Condo Chalong  
398 Units  
Completion 2026



Fantasea Condo  
Rawai  
174 Units  
Completion 2027





# FANTASEA CONDO

RAWAI PHUKET THAILAND

FANTASEA PLUS COMPANY LIMITED